



曼尼亚  
Mania

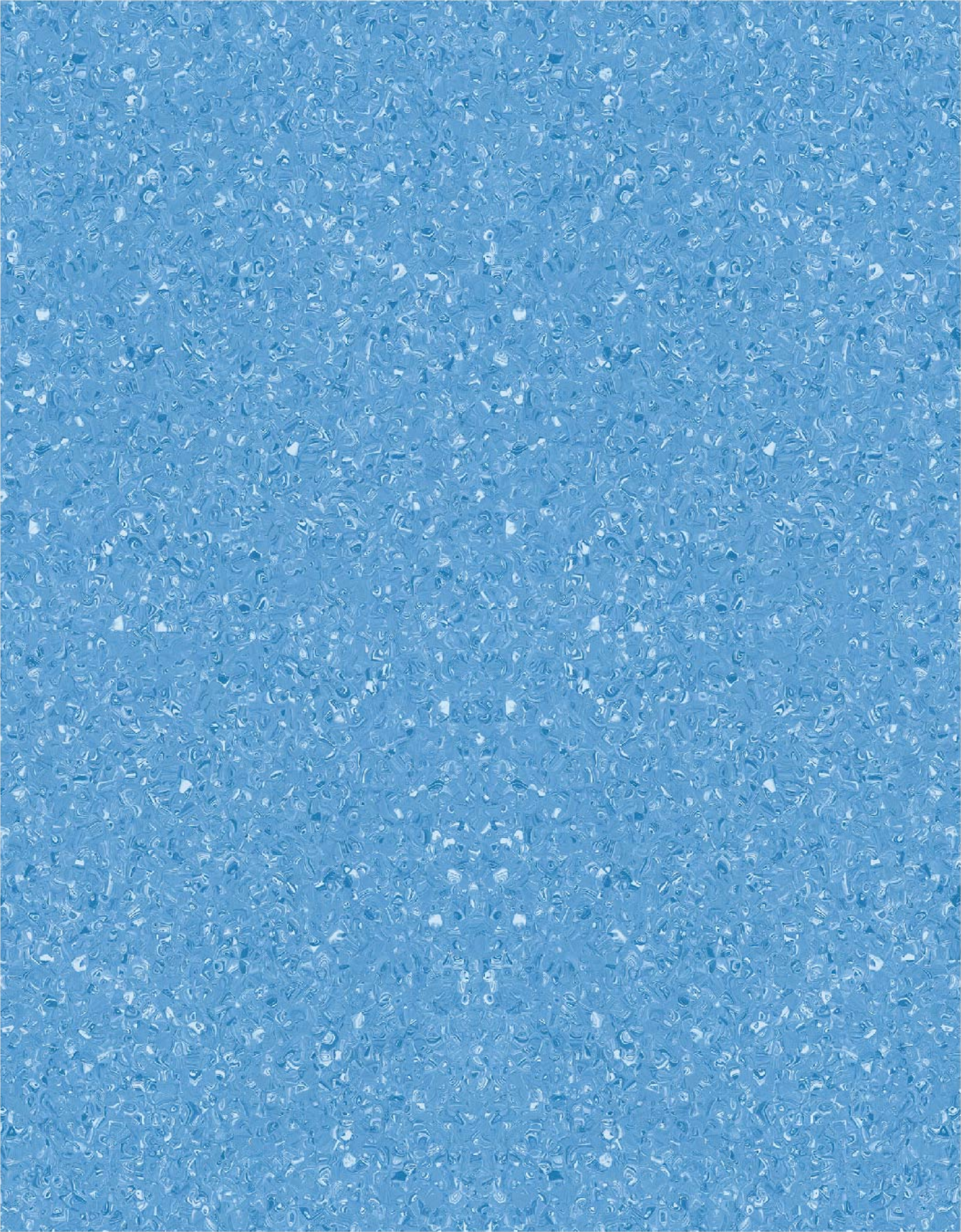
同透商用卷材地板

**DajuLong**<sup>®</sup>  
大巨龙弹性地板



# 曼尼亚

规格: 2.0mm × 2.0m × 20m



TJ-9033



# Mania

Dimension: 2.0mm x 2.0m x 20m



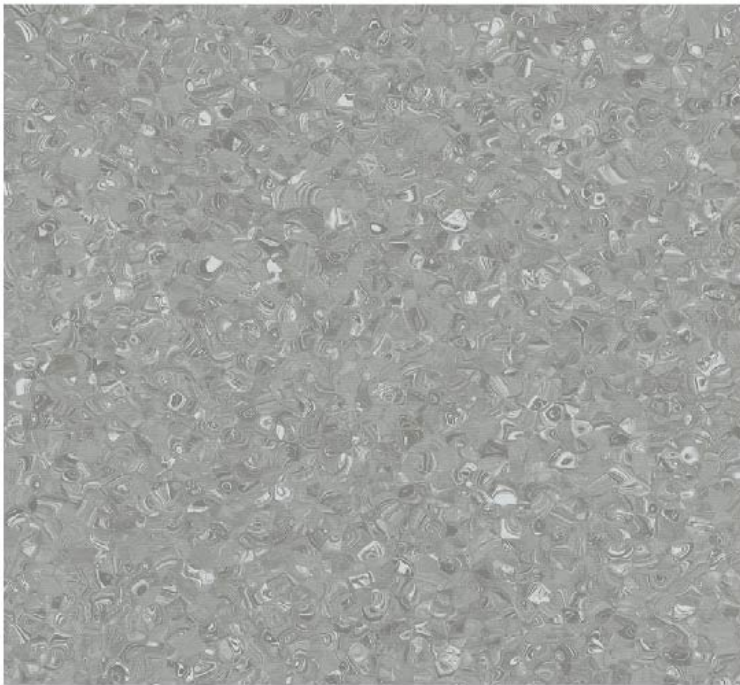
TJ-9000



TJ-9003



TJ-9001



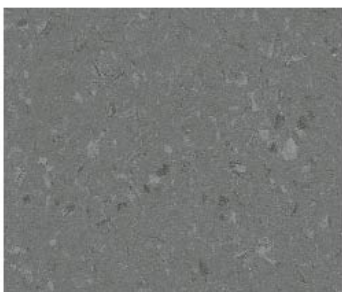
TJ-9022



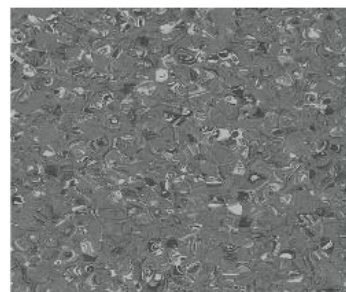
TJ-9024



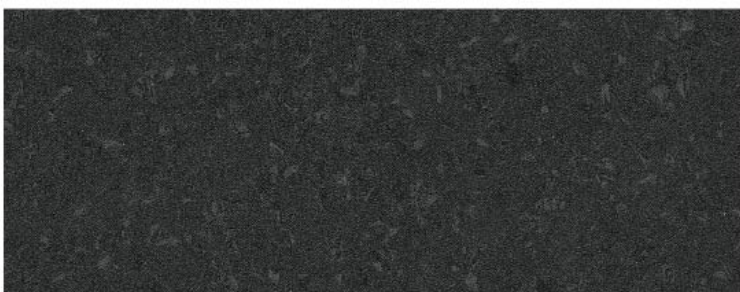
TJ-9021



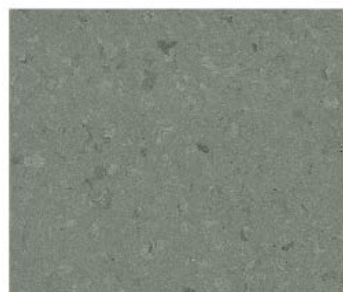
TJ-9026



TJ-9023



TJ-9028



TJ-9027



TJ-9025

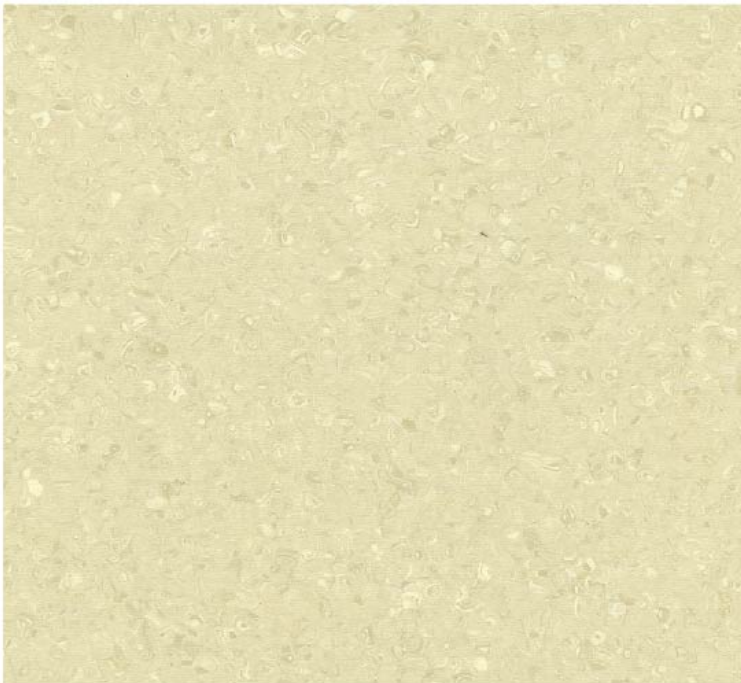


# 曼尼亚

规格: 2.0mm × 2.0m × 20m



TJ-9002



TJ-9011



TJ-9015



TJ-9014



TJ-9012



TJ-9054



TJ-9052



TJ-9051



TJ-9013



TJ-9055



TJ-9053



TJ-9056



# Mania

Dimension: 2.0mm x 2.0m x 20m



TJ-9030



TJ-9040



TJ-9042



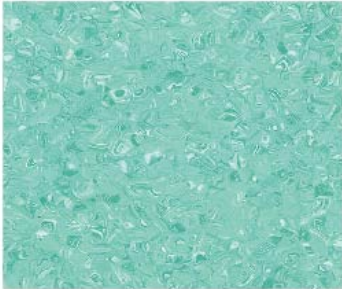
TJ-9061



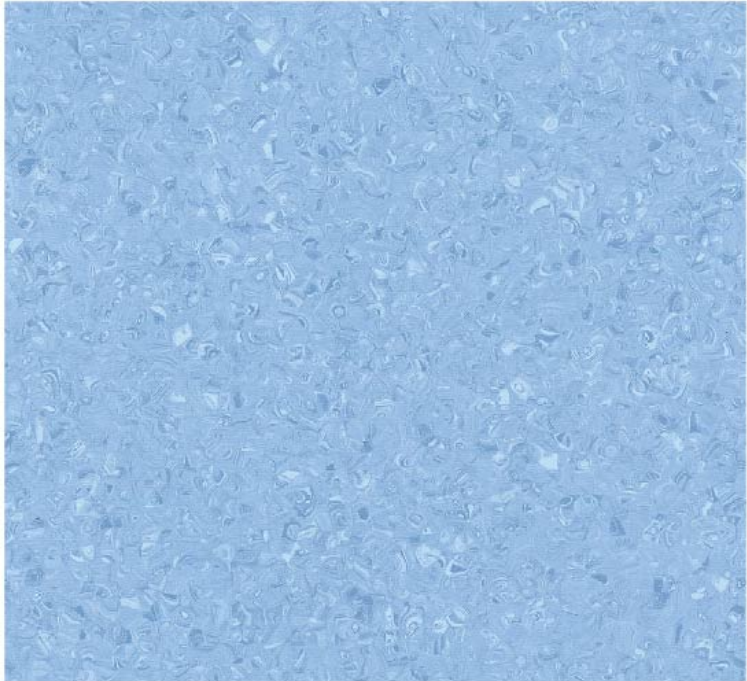
TJ-9031



TJ-9041



TJ-9043



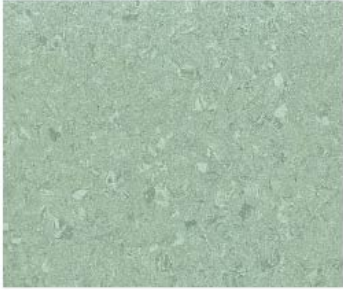
TJ-9032



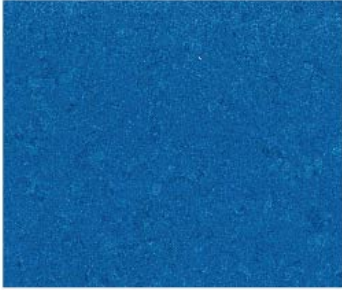
TJ-9044



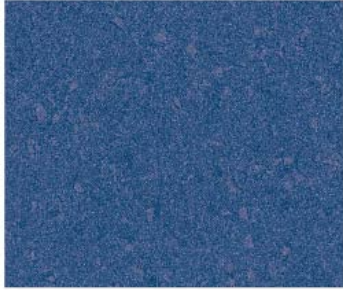
TJ-9062



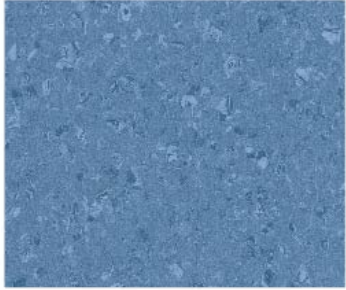
TJ-9045



TJ-9071



TJ-9035



TJ-9034

Description 规格	Standard 标准	Result 结果
Total thickness 总厚度	EN 428	2.0 mm
Width 宽度	EN 426	2 m
Length of sheet 卷长	EN 426	20 m

### Classification 类别

Fire rating 防火等级	GB 8624-2012	B1
Toxic testing 有害物质检测	GB 18586-2001	Good 合格
Electrical resistance 抗电阻性	EN 1081	> 10 <sup>9-10</sup>
Slip resistance dry 防干滑性	EN 13893	≥ 0.3
Slip resistance wet 防湿滑性	EN 51 130	R9

### Performances 性能

Castor chair test 轮压测试	EN 425	No damage 合格
Colour fastness 颜色稳定性	EN ISO 105 - B02	≥ 6
Chemical products resistance 抗化学性	EN 423	Good 好
Dimensional stability 尺寸稳定性	EN 434	≤ 0.40%
Curl resultant to heat 加热翘曲	EN 434	≤ 4 mm
Sound reduction 消音率	EN ISO 717/2	Approx. 4 dB
Residual indentation 残余凹陷度	EN 433	0.03mm
Anti-bacterial and fungicidal 抗菌防霉性能		Good 好
VOC 挥发物排放量		< 10
Surface treatment 表面处理		PUR

Intertek 抗菌检测报告



FloorScore 环保检测报告



SGS 防火检测报告

